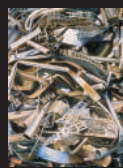


SCRAP



Swansea Community Recycling Alliance Partnership

Scrap is not just waste materials! In the case of Swansea Community Recycling Alliance Partnership it's about bringing together all organisations and individuals in the Swansea County who are involved in Waste Management and Recycling.

The partnership seeks to promote sustainable waste management and recycling and has been established to bring together those already active in this field, to serve as a "Starter Nucleus" for the development subsequently of a Forum that represents the **WHOLE** of the recycling sector in the Swansea area. Members are asked to be as open and transparent as possible to engender real working relationships that truly benefit every resident of the City & County of Swansea. The Partnership itself is open and accessible to the whole of the community.

Thus far, sector contributions, input and support have been received from:

- | | |
|---|--|
| Environment Centre | City & County of Swansea |
| Enfys Foundation | Sundance Renewables |
| Resarec | West Glamorgan Forum |
| Cylch - Wales Community Recycling Network | Welsh Initiative for Supported Employment (WISE) |
| Swansea Environmental Forum | Phillips Electrical |
| Swansea Community Farm | MOre Green Recycling Project |
| Swansea Waste Forum | Sustainable Wales |
| Black Environment Network | Sustainable Swansea |
| Friends of the Earth | Swansea City Waste |
| Gwalia Housing Association | Swansea Waste Forum |
| The Land Registry | Mumbles Development Trust (MDT) |
| Swansea Institute of Higher Education | PMD Developments |
| | Ystrad Re-Use |

Through the medium of the recycling sector, the Partnership plans to contribute positively to the reduction in waste being currently directed toward disposal where this process will of course, have the potential to generate numerous other additional benefits for the Swansea Community, (Impacting as such, on aspects of social well-being, employment, local ownership and self-worth, health, economic development, transportation, social opportunity, training and education, etc) Hence offering a contribution to the social regeneration of Swansea.



The partnership is continually developing and seeking to improve its interaction with the sector and to enable the appropriate forum that satisfies the relevant eligibility criteria of applicable funding structures. E.G. The Strategic Recycling Scheme launched in April 2005.

It is with this potential in mind, that we seek to introduce you to the SCRAP partnership and would ask for any positive support and comment you can offer regarding this.

Please respond by passing this information to any relevant person that you know who is involved in this sector, or contact us at the address provided below, for any further information you may require.

Contact Info:
Phillip S Marks (Chair)
Swansea Community Recycling Alliance Partnership



32 Anglesey Way
Nottage, Porthcawl
Bridgend CF36 3QP
Tel 01656 785384
Mobile 07968 938309
Email: phil.marks@cylch.org.uk